
4 Parts and diagrams

- [Order parts by authorized service providers](#)
- [How to use the parts lists and diagrams](#)
- [Assembly locations](#)
- [Covers](#)
- [Internal assemblies](#)
- [PCAs](#)
- [Alphabetical parts list](#)
- [Numerical parts list](#)

Order parts by authorized service providers

Order parts, accessories, and supplies

Table 4-1 Order parts, accessories, and supplies

Order supplies and paper	www.hp.com/go/suresupply
Order genuine HP parts or accessories	www.hp.com/buy/parts
Order through service or support providers	Contact an HP-authorized service or support provider.

Related documentation and software

Table 4-2 Related documentation and software

Item	Description	Part number
<i>HP LaserJet P1100 Printer series User Guide</i>	Product user guide.	CE651-90901
<i>HP LaserJet P1100 Printer series Service Manual</i>	English service manual (this manual)	CE651-90953

Supplies part numbers

Table 4-3 Supplies part numbers


Item	Description	Part number
HP LaserJet print cartridge	Print cartridge	CE285A (new) CE285-67901 (service)

Customer self repair parts

Table 4-4 Customer replaceable units (CRU) kit part numbers

Item	Description	Part number
Kit, separation pad	Separation pad	CE651-67901
	Installation instructions	
Kit, pickup roller	Pickup roller	CE651-67902
	Installation instructions	

Service parts

 **NOTE:** The parts in the following table are not shown in the assembly illustrations in this chapter.

Item	Description	Part number
HP jewel	HP logo	7121-8265
Regulatory label	Blank label	5969-9497

Whole-unit replacement part numbers

Table 4-5 Whole-unit replacement part numbers

Item	Description	Part number
HP LaserJet Professional P1100 Printer series	220 V	CE651-67002 (new)
		CE651-69002 (exchange)
HP LaserJet Professional P1100w Printer series	110 V	CE657-67001 (new)
		CE657-69001 (exchange)
	220 V	CE657-67002 (new)
		CE657-69002 (exchange)

How to use the parts lists and diagrams

△ **CAUTION:** Be sure to order the correct part. When looking for part numbers for electrical components, pay careful attention to the voltage that is listed. Doing so will make sure that the part number selected is for the correct model.

📄 **NOTE:** In this manual, the abbreviation “PCA” stands for “printed circuit-board assembly.” Components described as a PCA might consist of a single circuit board or a circuit board plus other parts, such as cables and sensors.

The figures in this chapter show the major subassemblies in the product and their component parts. A parts list table follows each exploded view assembly diagram. Each table lists the item number, the associated part number, and the description of each part. If a part is not listed in the table, then it is not a field replacement unit (FRU).

Assembly locations

Base product

Figure 4-1 Base product

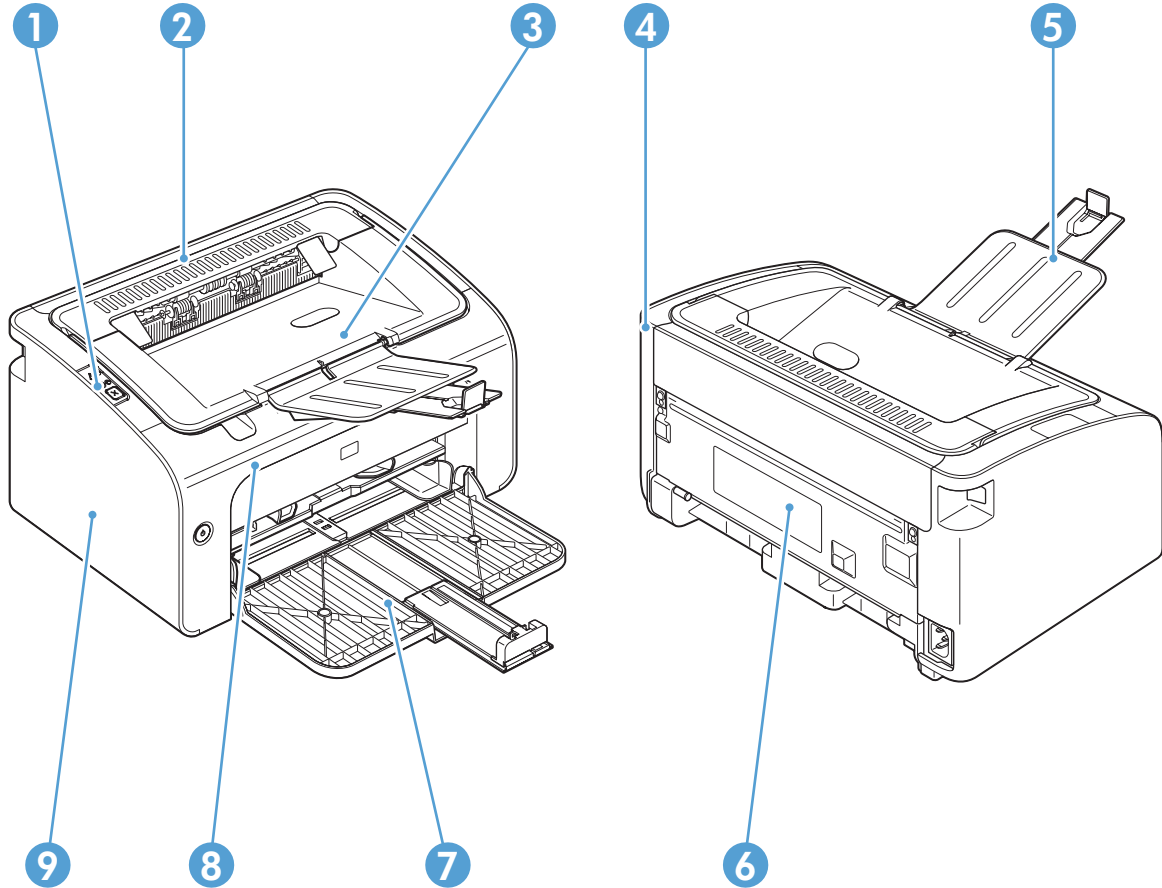


Table 4-6 Base product

Item	Description	Item	Description
1	Control panel	6	Rear cover
2	Face-down cover	7	Input tray or main-input tray NOTE: The HP LaserJet Professional P1100 Printer series has a single input tray. The HP LaserJet Professional P1100w Printer series has a main-input tray and a priority input slot.
3	Print-cartridge door	8	Front cover
4	Right cover	9	Left cover
5	Output bin tray extension		

Covers

Base model

Figure 4-2 Base model

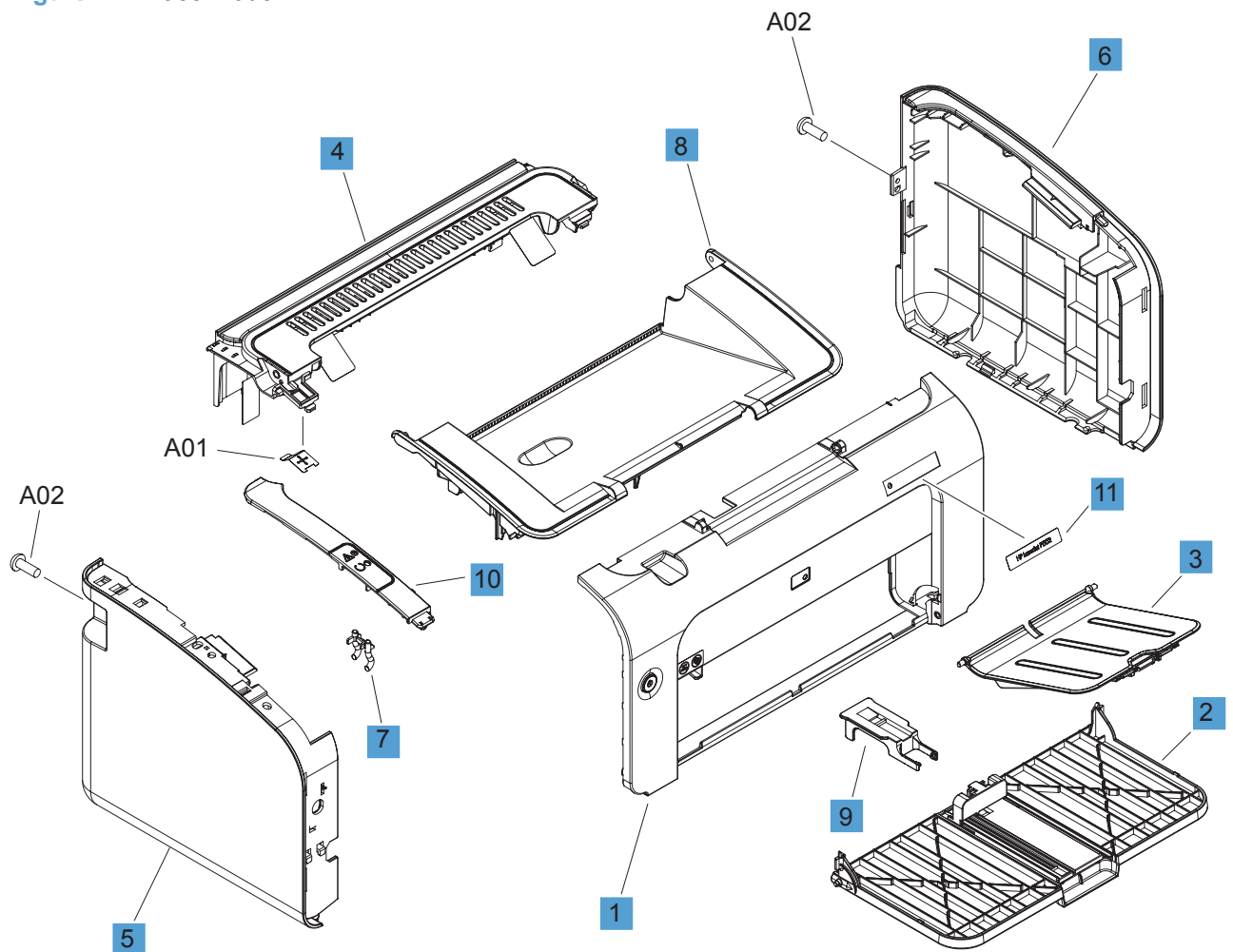


Table 4-7 Base model

Ref	Description	Part number	Qty
1	Front cover	RM1-6891-000CN	1
2	Paper pickup tray assembly	RM1-6899-000CN	1
3	Paper delivery tray assembly	RM1-6902-000CN	1
4	Face-down cover assembly	RM1-6889-000CN	1
5	Left cover assembly	RM1-6875-000CN	1
6	Right cover assembly	RM1-6890-000CN	1
7	Pipe, light	RC2-1108-000CN	1
8	Door, print cartridge	RC2-9237-000CN	1
9	Stopper, paper	RC2-9244-000CN	1
10	Plate, left	RL1-2991-000CN	1
11	Plate, name	RC3-0540-000CN	1

Wireless model

Figure 4-3 Wireless model

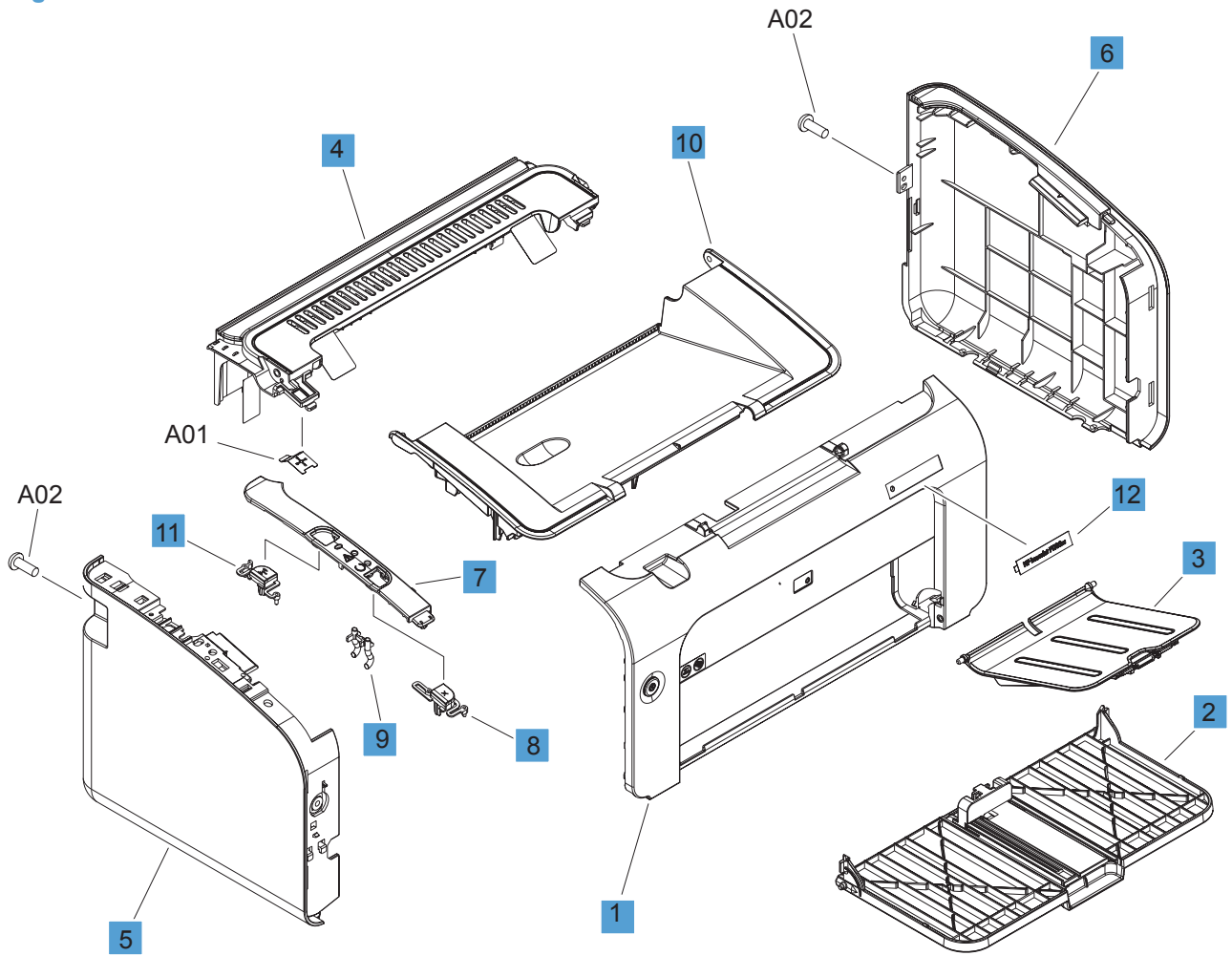


Table 4-8 Wireless model

Ref	Description	Part number	Qty
1	Front cover	RM1-6894-000CN	1
2	Paper pickup tray assembly	RM1-6901-000CN	1
3	Paper delivery tray assembly	RM1-6903-000CN	1
4	Face-down cover assembly	RM1-6892-000CN	1
5	Left cover assembly	RM1-6895-000CN	1
6	Right cover assembly	RM1-6893-000CN	1
7	Plate, left	RL1-2993-000CN	1
8	Button, cancel	RC2-9238-000CN	1
9	Pipe, light	RC3-0514-000CN	1
10	Door, print cartridge	RC3-0492-000CN	1
11	Button, Wi-Fi	RC3-0495-000CN	1
12	Plate, name	RC3-0543-000CN	1
12	Plate, name (for Brazil)	CE657-00001	

Internal assemblies

Internal assemblies (1 of 3)

Figure 4-4 Internal assemblies (1 of 3)

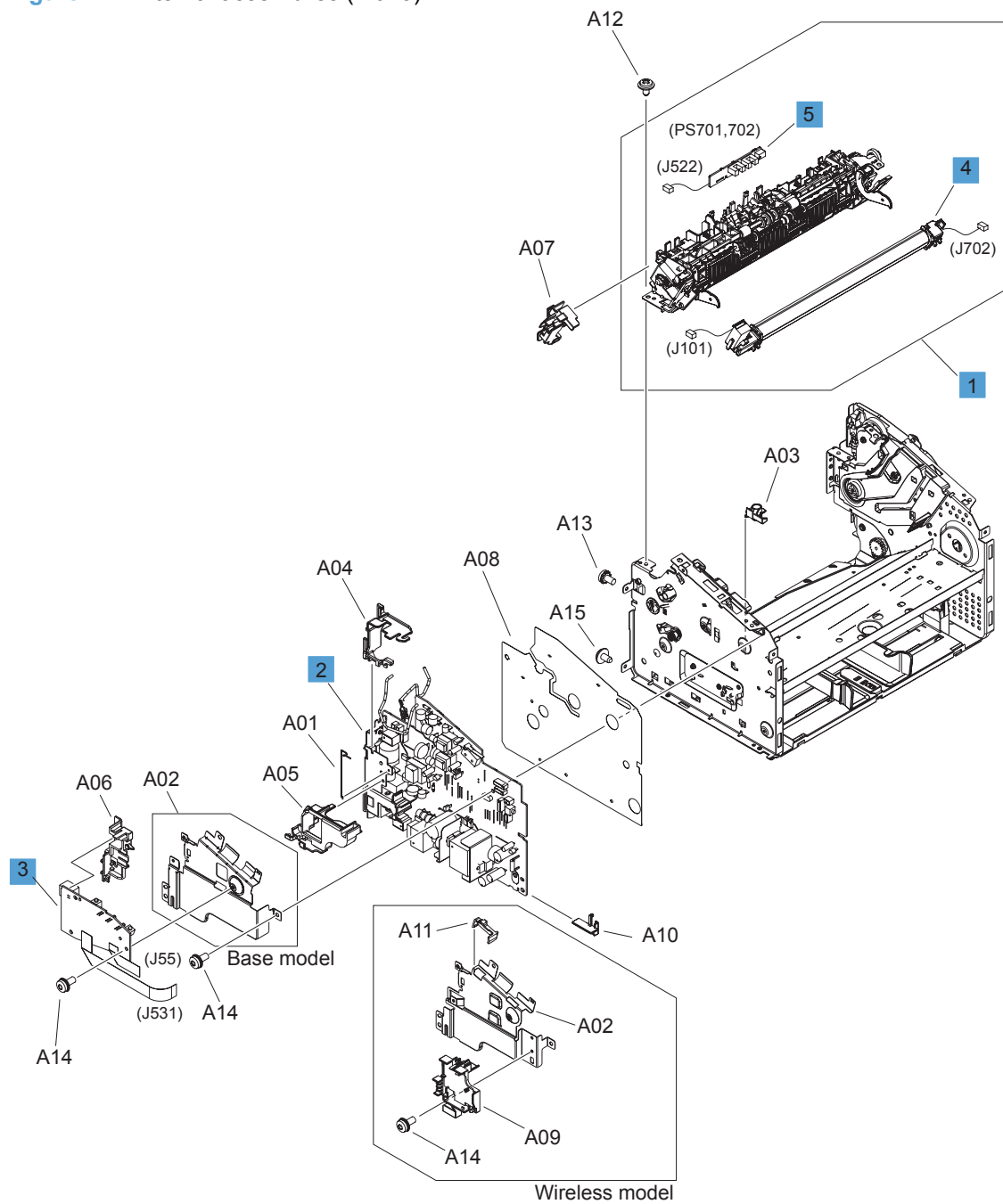


Table 4-9 Internal assemblies (1 of 3)

Ref	Description	Part number	Qty
1	Fuser delivery assembly (110 V)	RM1-6920-000CN	1
1	Fuser delivery assembly (220 V)	RM1-6921-000CN	1
2	Engine controller PCA, base model (220 V)	RM1-7591-000CN	1
2	Engine controller PCA, wireless model (110 V)	RM1-7595-000CN	1
2	Engine controller PCA, wireless model (220 V)	RM1-7596-000CN	1
3	Formatter PCA, base model	RM1-7600-000CN	1
3	Formatter PCA, wireless model	RM1-7601-000CN	1
4	Fuser film assembly (110 V)	RM1-6872-000CN	1
4	Fuser film assembly (220 V)	RM1-6873-000CN	1
5	Delivery sensor PCA assembly	RM1-8066-000CN	1

Internal assemblies (2 of 3)

Figure 4-5 Internal assemblies (2 of 3)

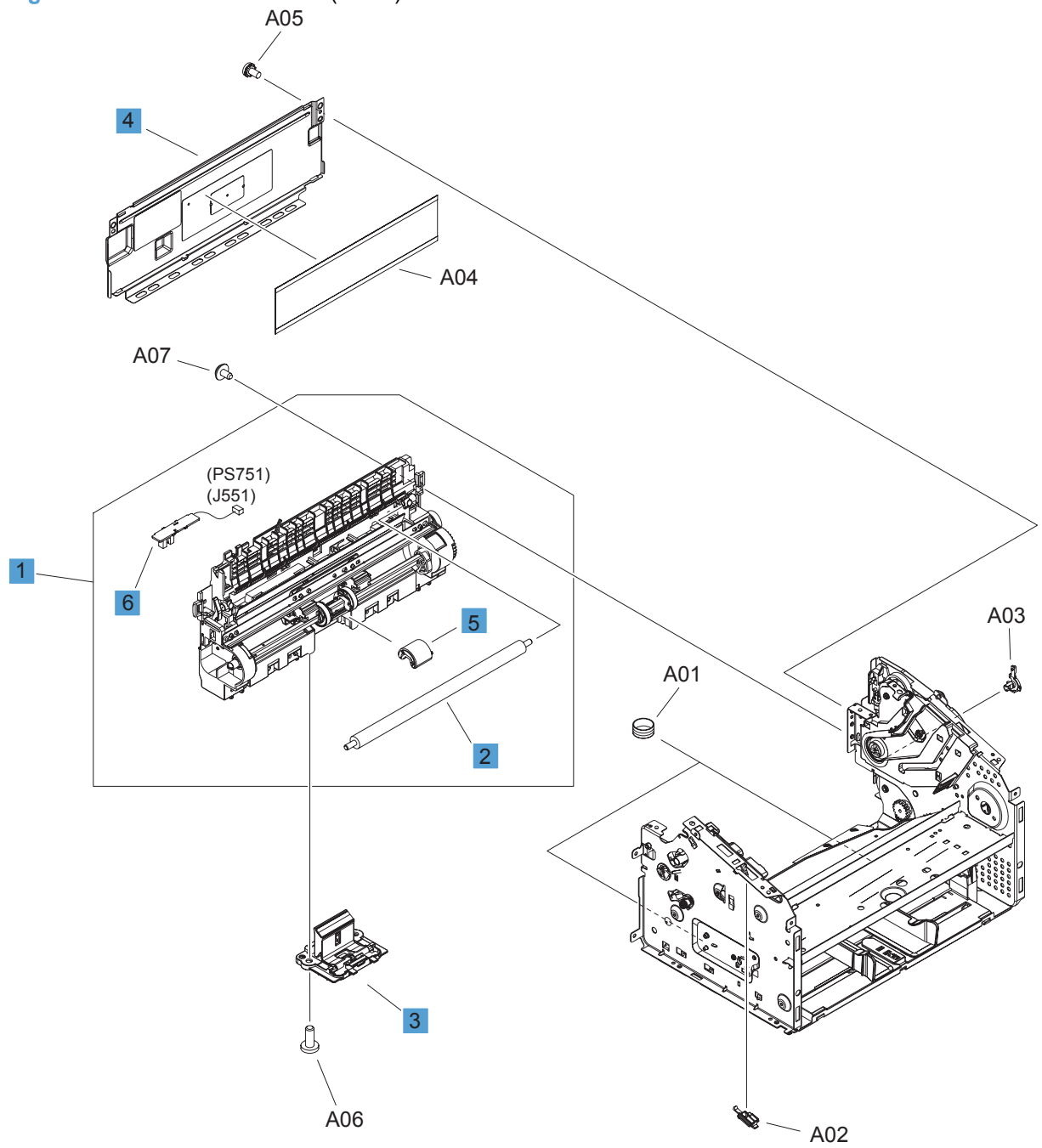


Table 4-10 Internal assemblies (2 of 3)

Ref	Description	Part number	Qty
1	Pickup transfer frame assembly, base model	RM1-6880-000CN	1
1	Pickup transfer frame assembly, wireless mode	RM1-6915-000CN	1
2	Transfer roller	RM1-4023-000CN	1
3	Separation pad assembly	RM1-4006-000CN	1
4	Panel, rear	RC2-1123-000CN	1
5	Roller, paper pickup	RL1-2593-000CN	1
6	Paper pickup sensor PCA assembly, base model	RM1-7593-000CN	1
6	Paper pickup sensor PCA assembly, wireless model	RM1-7598-000CN	1

Internal assemblies (3 of 3)

Figure 4-6 Internal assemblies (3 of 3)

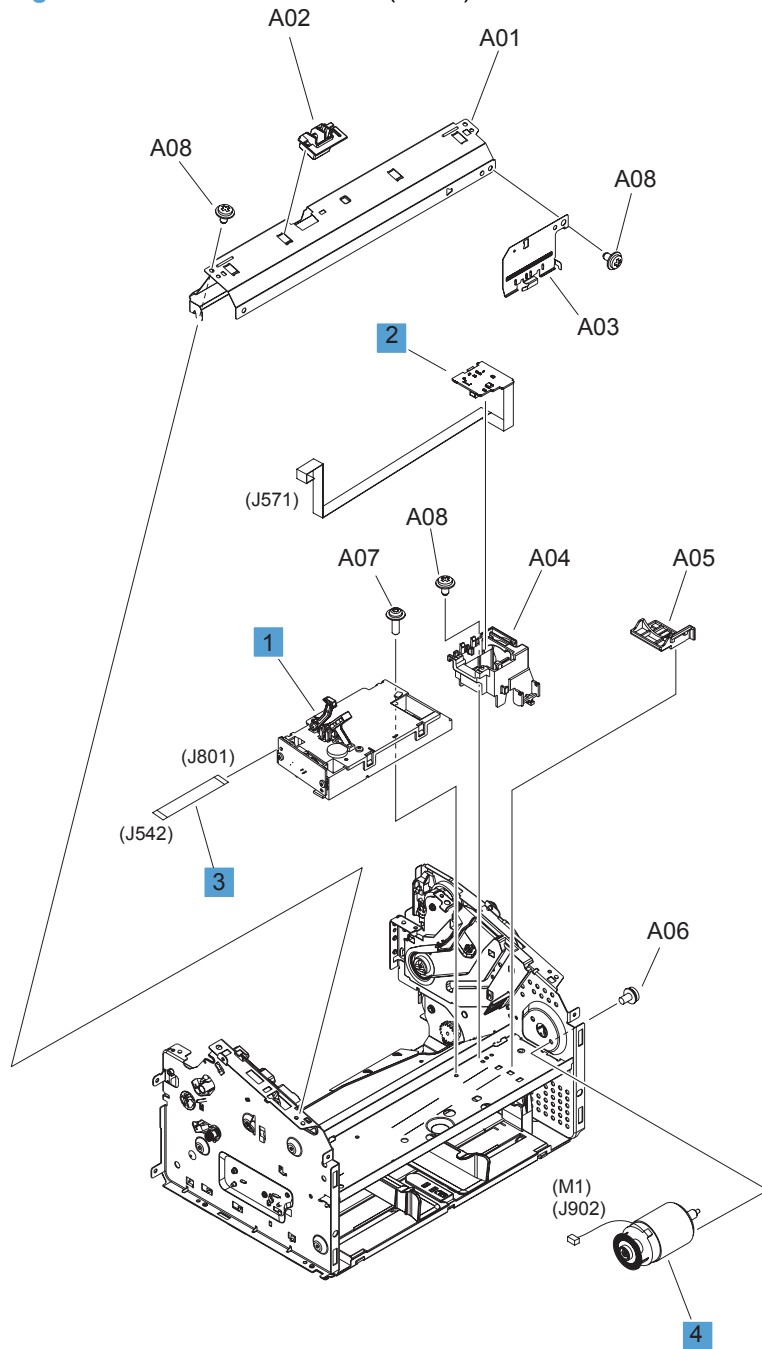


Table 4-11 Internal assemblies (3 of 3)

Ref	Description	Part number	Qty
1	Laser/scanner assembly	RM1-6878-000CN	1
2	Motor PCA, base model	RM1-7594-000CN	1
2	Motor PCA, wireless model	RM1-7599-000CN	1
3	Cable, flat (FFC)	RM1-7604-000CN	1
4	Motor, DC24V	RL1-2591-000CN	1

PCAs

Figure 4-7 PCAs

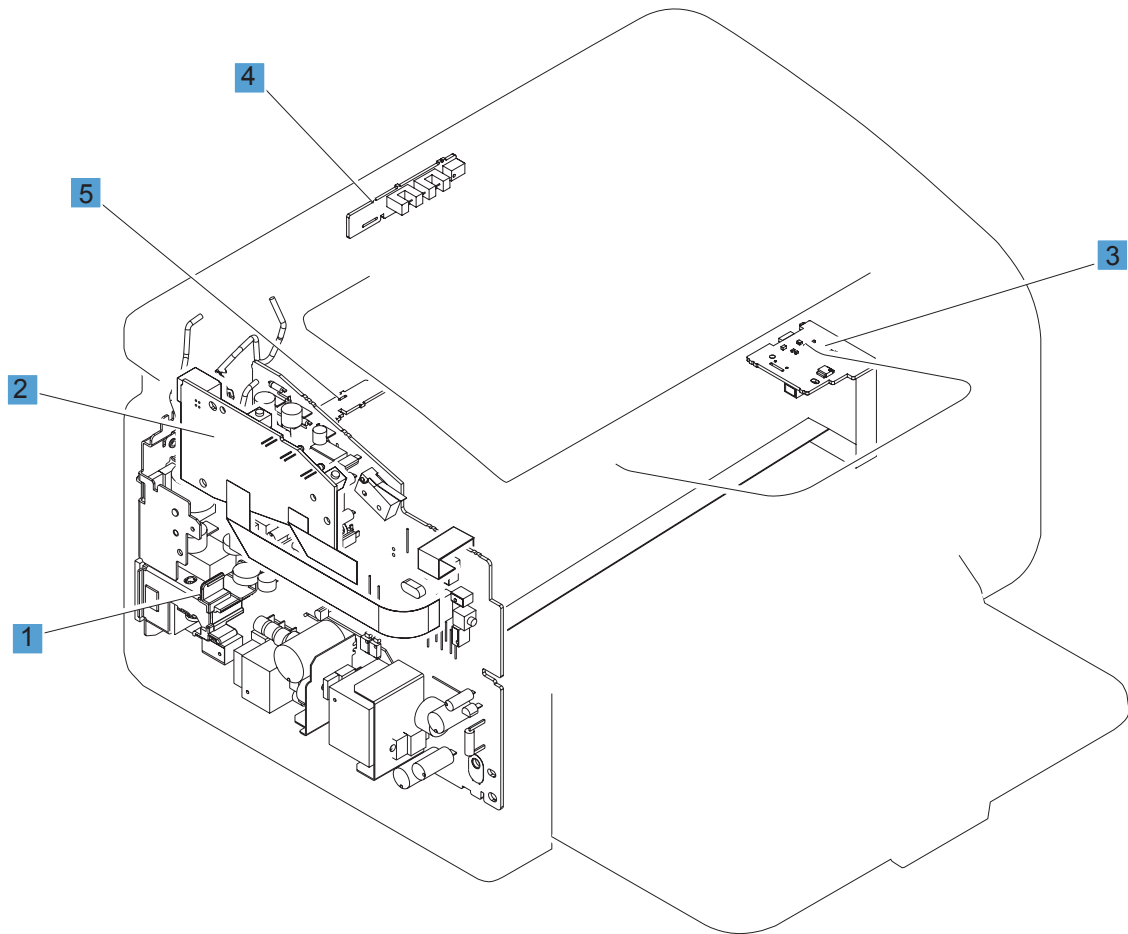


Table 4-12 PCAs

Ref	Description	Part number	Qty
1	Engine controller PCA, base model (220 V)	RM1-7591-000CN	1
1	Engine controller PCA, wireless model (220 V)	RM1-7596-000CN	1
2	Formatter PCA, base model	RM1-7600-000CN	1
2	Formatter PCA, wireless model	RM1-7601-000CN	1
2	Formatter PCA, wireless model (for Brazil)	CE670-60001	1
3	Motor PCA, base model	RM1-7594-000CN	1
3	Motor PCA, wireless model	RM1-7599-000CN	1
4	Delivery sensor PCA assembly	RM1-8066-000CN	1
5	Paper pickup sensor PCA assembly, base model	RM1-7593-000CN	1
5	Paper pickup sensor PCA assembly, wireless model	RM1-7598-000CN	1
Not shown	Wireless PCA	CE867-60001CN	1